

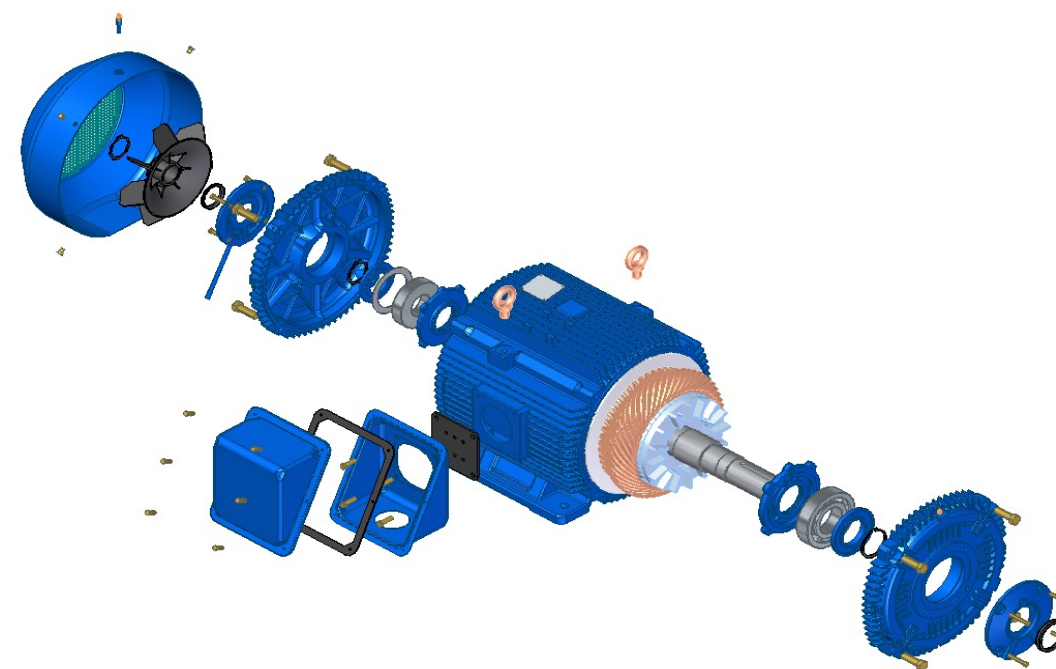
HICO SEVERE DUTY MOTOR

PREMIUM EFFICIENCY



Industrial Machinery
Performance Unit

HICO SEVERE DUTY MOTOR PREMIUM EFFICIENCY



Features and Benefits



Revolutionary Energy and Power Saving

Enabling high-precision cost control through advanced rotor-stator topology and optimized electromagnetic winding configuration



High Reliability

Utilizing certified materials and advanced insulation technologies to minimize vibration and extend winding lifespan



Compliance of international standards

Engineered to meet global regulatory and performance requirements, including NEMA, IEC, and ISO standards, ensuring system compatibility and operational reliability



Hyosung is ready to meet your needs

Hyosung heavy industries, the no. 1 manufacturer of electric motors in Korea, is now leading the global market for various industries and applications.

Product specifications

Efficiency	Premium Efficiency		
Output power	Up to 200HP	Frame size	143T-449T
Voltage	230/460V	NEMA design	B
Frequency	60Hz, 50Hz(Available)	VFD	VT 20:1, CT 10:1, CHp 60~90Hz
Pole	2, 4, 6	Class 1 Division 2 Group B,C & D	

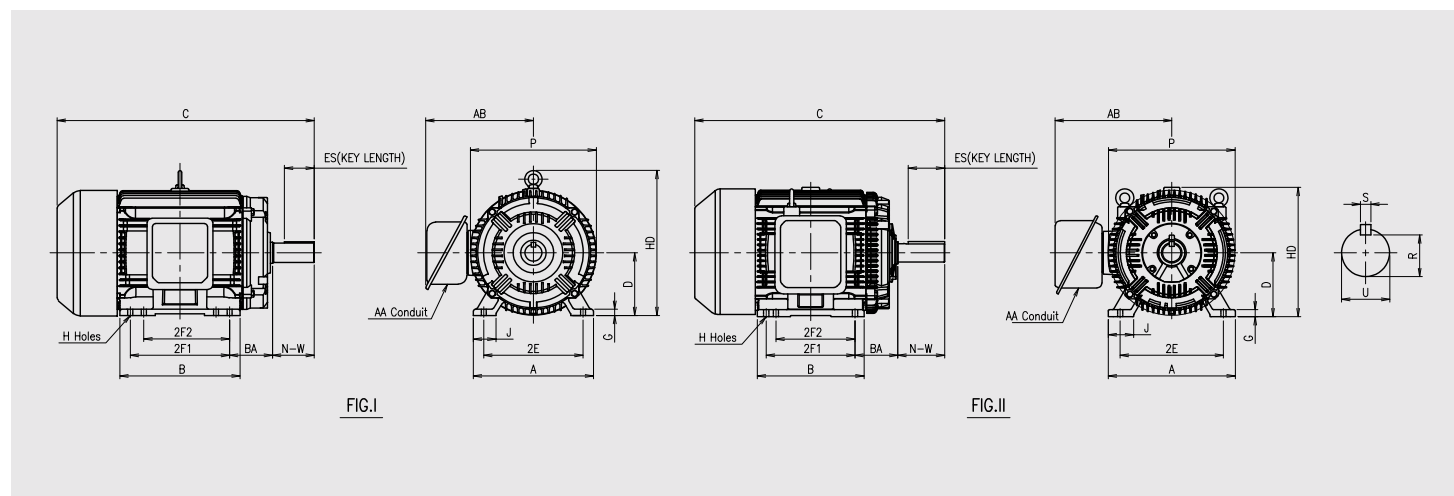
Product Features

		Standard specification	Available options
Frame		143T-449T	
HP		1-200HP	
RPM		3600rpm(2Pole), 1800rpm(4Pole), 1200rpm(6Pole)	
Voltage		60Hz: 230/460V 50Hz: Usable at 208V	Various voltage as per customer's requirement (Max. 600V ac)
Enclosure		TEFC	TEAO
Mounting		Foot mounted Flange mounted(C-Face, D-Flange) Foot & Flange mounted(C-Face, D-Flange)	
Service factor		1.25 at 60Hz (Up to 200HP) 1.0 at 50Hz	
Insulation		Class F	Class H
Temperature rise		Class B	
Torque design		NEMA design B	
Inverter duty		CT 10:1, VT 20:1, CHp 60~90Hz	
Environment		Altitude 3300ft. / Ambient Temperature 40°C	
Material	Frame	Cast iron	
	Stator, Rotor	Premium electrical steel lamination	
	Brackets	Cast iron	
	Fan cover	Steel	
	Conduit box	Steel	Cast iron
	Wire	Corona-resistance copper wire	
Bearing	Type	Deep groove ball bearing	Roller bearing, Insulated bearing
	Re-greasable	320T-440T	250T-280T
Grease		Mobil _ Polyrex EM	Various greases as per customer's requirement
Conduit box		F1 to F2 conversion: 140T-320T Rotatable by 90°	Oversized conduit box
Rotation		Bi-Direction	
Lead wire		1-10HP : 9 wires 15-200HP : 12 wires	Various number of leads as per customer's requirement
Nameplate		stainless steel nameplate	
Certificate		CSA Class I Division 2 group B,C and D / UL / DOE	
Painting	Material	Urethane	Enamel, Epoxy
	Color	Munsell 0.5PB 3.2/4.4	
Accessories		-	Space Heater, Temperature detecting devices (Thermistor, Thermostat, RTD, Thermocouple)

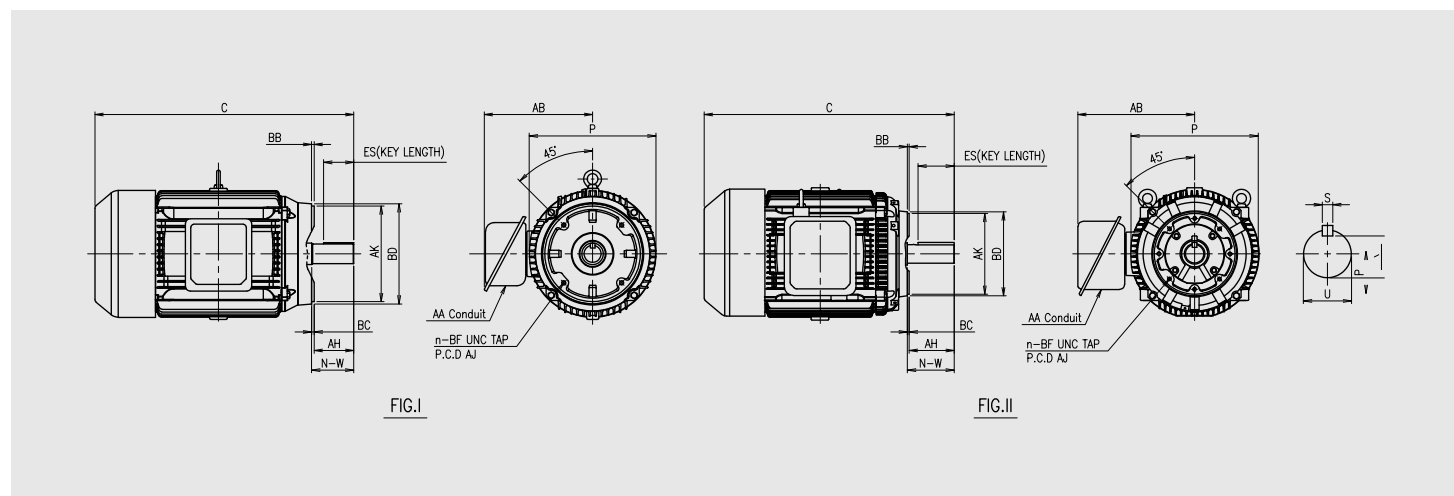
Performance Data

Rated power (HP)	Speed (RPM)	NEMA Frame	Voltage (V)	Efficiency @FL (%)	Power factor @FL (%)	Rated current (A)		Starting current (%)	Rated torque (lb.ft)	Starting torque (%)	Breakdown torque (%)	Weight (lbs)
						230V	460V					
1	3600	143T	230/460	77.0	88.7	2.7	1.4	900	1.5	340	390	49
	1800	143T	230/460	85.5	61.1	3.6	1.8	860	3.0	350	408	56
	1200	145T	230/460	82.5	67.9	3.3	1.7	500	4.6	170	270	61
1.5	3600	143T	230/460	84.0	88.8	3.8	1.9	950	2.3	330	370	56
	1800	145T	230/460	86.5	73.5	4.4	2.2	740	4.5	250	300	58
	1200	182T	230/460	87.5	62.6	5.1	2.6	620	6.7	170	254	93
2	3600	145T	230/460	85.5	88.8	4.9	2.5	870	3.0	290	338	56
	1800	145T	230/460	86.5	75.0	5.8	2.9	740	6.0	235	270	60
	1200	184T	230/460	88.5	77.0	5.5	2.7	550	8.9	165	240	103
3	3600	182T	230/460	86.5	84.0	7.7	3.9	830	4.5	300	400	89
	1800	182T	230/460	89.5	78.4	8.0	4.0	740	8.9	215	265	102
	1200	213T	230/460	89.5	70.9	8.9	4.4	610	13.4	235	272	146
5	3600	184T	230/460	88.5	86.2	12.3	6.1	780	7.5	260	305	92
	1800	184T	230/460	89.5	80.0	13.1	6.5	660	14.9	200	235	102
	1200	215T	230/460	89.5	73.5	14.2	7.1	700	22.4	180	227	162
7.5	3600	213T	230/460	89.5	87.9	17.9	8.9	650	11.2	240	280	132
	1800	213T	230/460	91.7	75.2	20.4	10.2	640	22.3	200	250	157
	1200	254T	230/460	91.0	76.9	20.1	10.0	510	33.5	160	210	281
10	3600	215T	230/460	90.2	83.5	24.9	12.4	700	15.0	250	350	150
	1800	215T	230/460	91.7	76.5	26.7	13.3	600	29.7	210	260	184
	1200	256T	230/460	91.0	74.7	27.5	13.8	630	44.7	250	292	284
15	3600	254T	230/460	91.0	84.2	36.7	18.3	640	22.2	210	298	268
	1800	254T	230/460	92.4	80.2	37.9	19.0	620	44.4	200	230	283
	1200	284T	230/460	91.7	77.1	39.7	19.9	590	66.8	175	216	352
20	3600	256T	230/460	91.0	85.4	48.2	24.1	560	29.7	190	285	288
	1800	256T	230/460	93.0	80.2	50.2	25.1	620	59.4	200	237	333
	1200	286T	230/460	91.7	76.8	53.2	26.6	560	89.1	160	205	439
25	3600	284TS	230/460	91.7	86.7	58.9	29.4	600	37.1	185	230	362
	1800	284T	230/460	93.6	81.4	61.4	30.7	630	73.8	190	237	405
	1200	324T	230/460	93.0	81.5	61.8	30.9	630	111.3	195	243	526
30	3600	286TS	230/460	91.7	85.7	71.5	35.7	650	44.4	170	220	413
	1800	286T	230/460	93.6	81.7	73.5	36.7	640	88.6	210	240	456
	1200	326T	230/460	93.0	79.4	76.1	38.0	610	133.6	215	258	557
40	3600	324TS	230/460	92.4	87.7	92.4	46.2	670	59.2	150	200	534
	1800	324T	230/460	94.1	83.8	95.0	47.5	650	118.4	185	235	549
	1200	364T	230/460	94.1	80.1	99.4	49.7	630	177.4	185	235	724
50	3600	326TS	230/460	93.0	87.3	115.3	57.7	680	73.9	170	203	587
	1800	326T	230/460	94.5	83.0	119.4	59.7	650	148.0	190	240	579
	1200	365T	230/460	94.1	84.1	118.3	59.2	650	221.8	150	200	791
60	3600	364TS	230/460	93.6	91.1	131.8	65.9	710	88.8	120	188	794
	1800	364T	230/460	95.0	85.2	138.8	69.4	670	176.7	170	255	747
	1200	404T	230/460	94.5	81.6	145.7	72.9	640	267.2	135	200	1,121
75	3600	365TS	230/460	93.6	90.4	166.0	83.0	700	110.9	130	230	823
	1800	365T	230/460	95.4	85.4	172.4	86.2	650	220.8	170	268	863
	1200	405T	230/460	94.5	81.9	181.5	90.7	640	331.2	140	200	1,168
100	3600	405TS	230/460	94.1	87.7	226.9	113.5	690	147.4	110	208	1,064
	1800	405T	230/460	95.4	83.7	234.5	117.3	650	294.4	170	265	1,130
	1200	444T	230/460	95.0	84.6	233.0	116.5	660	441.6	125	202	1,727
125	3600	444TS	230/460	95.0	89.0	276.9	138.4	700	184.0	120	200	1,495
	1800	444T	230/460	95.4	87.1	281.7	140.9	690	368.0	125	202	1,649
	1200	445T	230/460	95.0	83.5	295.1	147.5	660	552.1	125	200	1,772
150	3600	445TS	230/460	95.0	89.9	328.9	164.4	700	220.5	170	225	1,726
	1800	445T	230/460	95.8	87.7	334.3	167.2	700	441.6	110	200	1,746
	1200	447T	230/460	95.8	83.0	353.3	176.6	660	662.5	120	200	2,113
175	3600	447TS	230/460	95.4	90.0	381.7	190.8	650	257.6	140	240	1,987
	1800	447T	230/460	96.2	89.3	381.5	190.7	650	515.2	105	205	2,078
	1200	449T	230/460	95.8	84.5	404.8	202.4	670	772.9	120	200	2,238
200	3600	447TS	230/460	95.4	89.8	437.2	218.6	710	294.0	150	200	2,141
	1800	447T	230/460	96.2	87.5	444.9	222.5	700	588.9	100	200	2,323
	1200	449T	230/460	95.8	84.0	465.4	232.7	670	883.3	120	200	2,268

Dimensions



Dimensions



Foot mounted

[inch]

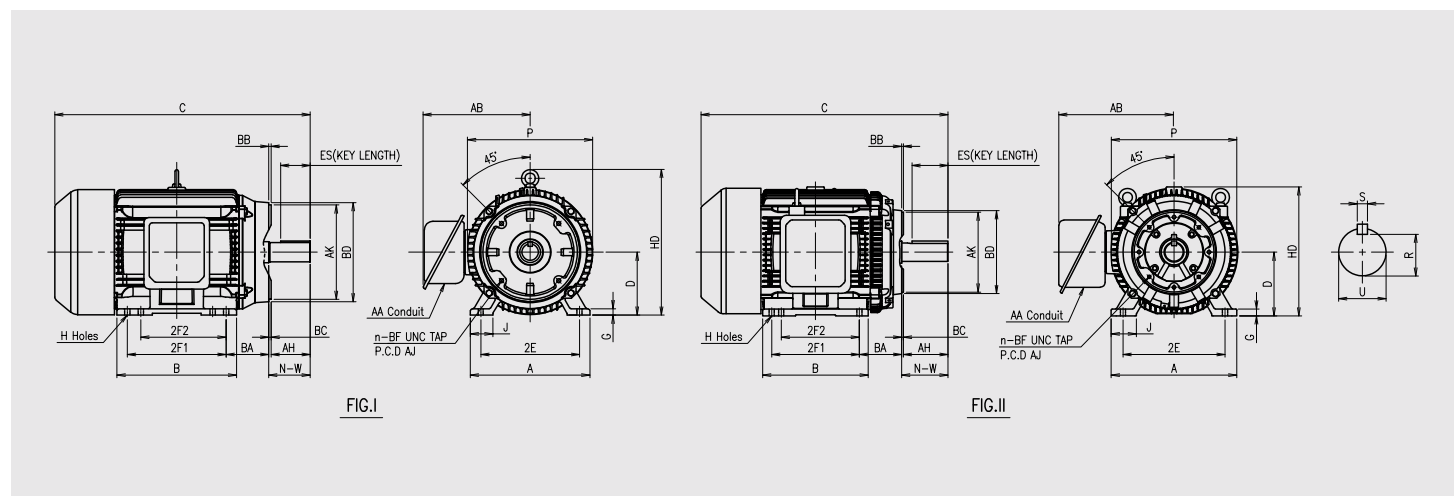
Frame	FIG.	Mounting										Shaft & Key					Overall				Conduit box
		D	2E	2F1	2F2	BA	A	B	G	J	H	N-W	U	S	R	ES	C	P	AB	HD	AA
143T	I	3.50	5.50	4.00	-	2.25	6.54	5.91	0.35	1.46	Ø0.34	2.25	Ø0.8750	0.188	0.771	1.41	13.40	7.20	6.60	8.85	Ø1.10
145T	I	3.50	5.50	5.00	4.00	2.25	6.54	5.91	0.35	1.46	Ø0.34	2.25	Ø0.8750	0.188	0.771	1.41	13.40	7.20	6.60	8.85	Ø1.10
182T	I	4.50	7.50	4.50	-	2.75	8.90	6.77	0.63	1.65	Ø0.41	2.75	Ø1.1250	0.250	0.986	1.81	15.5	8.94	8.10	11.15	Ø1.10
184T	I	4.50	7.50	5.50	4.50	2.75	8.90	6.77	0.63	1.65	Ø0.41	2.75	Ø1.1250	0.250	0.986	1.81	15.5	8.94	8.10	11.15	Ø1.10
213T	I	5.25	8.50	5.50	-	3.50	10.31	7.01	0.69	1.89	Ø0.41	3.38	Ø1.3750	0.312	1.201	2.44	17.35	10.24	8.80	12.55	Ø1.38
215T	I	5.25	8.50	7.00	5.50	3.50	10.31	8.50	0.69	1.89	Ø0.41	3.38	Ø1.3750	0.312	1.201	2.44	18.85	10.24	8.80	12.55	Ø1.38
254T	I	6.25	10.00	8.25	-	4.25	12.24	10.24	0.67	2.52	Ø0.53	4.00	Ø1.625	0.375	1.416	2.91	22.85	12.52	11.40	14.75	Ø1.77
256T	I	6.25	10.00	10.00	8.25	4.25	12.24	11.97	0.67	2.52	Ø0.53	4.00	Ø1.625	0.375	1.416	2.91	24.60	12.52	11.40	14.75	Ø1.77
284TS	I	7.00	11.00	9.50	-	4.75	13.31	11.81	0.71	2.52	Ø0.53	3.25	Ø1.625	0.375	1.416	1.93	25.60	13.94	11.95	16.25	Ø1.97
284T	I	7.00	11.00	9.50	-	4.75	13.31	11.81	0.71	2.52	Ø0.53	4.62	Ø1.875	0.500	1.591	3.30	26.95	13.94	11.95	16.25	Ø1.97
286TS	I	7.00	11.00	11.00	9.50	4.75	13.31	13.31	0.71	2.52	Ø0.53	3.25	Ø1.625	0.375	1.416	1.93	27.10	13.94	11.95	16.25	Ø1.97
286T	I	7.00	11.00	11.00	9.50	4.75	13.31	13.31	0.71	2.52	Ø0.53	4.62	Ø1.875	0.500	1.591	3.30	28.45	13.94	11.95	16.25	Ø1.97
324TS	I	8.00	12.50	10.50	-	5.25	15.04	13.00	0.98	2.75	Ø0.66	3.75	Ø1.875	0.500	1.591	2.00	28.55	15.59	14.40	18.45	Ø2.48
324T	I	8.00	12.50	10.50	-	5.25	15.04	13.00	0.98	2.75	Ø0.66	5.25	Ø2.125	0.500	1.845	3.875	30.15	15.59	14.40	18.45	Ø2.48
326TS	I	8.00	12.50	12.00	10.50	5.25	15.04	14.57	0.98	2.75	Ø0.66	3.75	Ø1.875	0.500	1.591	2.00	30.05	15.59	14.40	18.45	Ø2.48
326T	I	8.00	12.50	12.00	10.50	5.25	15.04	14.57	0.98	2.75	Ø0.66	5.25	Ø2.125	0.500	1.845	3.875	31.55	15.59	14.40	18.45	Ø2.48
364TS	I	9.00	14.00	11.25	-	5.88	16.77	14.37	0.98	2.91	Ø0.66	3.75	Ø1.875	0.500	1.591	2.00	30.65	17.56	15.60	21.00	Ø3.23
364T	I	9.00	14.00	11.25	-	5.88	16.77	14.37	0.98	2.91	Ø0.66	5.88	Ø2.375	0.625	2.021	4.25	32.80	17.56	15.60	21.00	Ø3.23
365TS	I	9.00	14.00	12.25	11.25	5.88	16.77	15.35	0.98	2.91	Ø0.66	3.75	Ø1.875	0.500	1.591	2.00	31.65	17.56	15.60	21.00	Ø3.23
365T	I	9.00	14.00	12.25	11.25	5.88	16.77	15.35	0.98	2.91	Ø0.66	5.88	Ø2.375	0.625	2.021	4.25	33.80	17.56	15.60	21.00	Ø3.23
404TS	II	10.00	16.00	12.25	-	6.62	19.69	14.96	1.1	3.94	Ø0.81	4.25	Ø2.125	0.500	1.845	2.75	34.20	19.61	18.05	20.24	Ø3.58
404T	II	10.00	16.00	12.25	-	6.62	19.69	14.96	1.1	3.94	Ø0.81	7.25	Ø2.875	0.750	2.450	5.625	37.20	19.61	18.05	20.24	Ø3.58
405TS	II	10.00	16.00	13.75	12.25	6.62	19.69	16.54	1.1	3.94	Ø0.81	4.25	Ø2.125	0.500	1.845	2.75	35.70	19.61	18.05	20.24	Ø3.58
405T	II	10.00	16.00	13.75	12.25	6.62	19.69	16.54	1.1	3.94	Ø0.81	7.25	Ø2.875	0.750	2.450	5.625	38.70	19.61	18.05	20.24	Ø3.58
444TS	II	11.00	18.00	14.50	-	7.50	21.65	18.70	1.18	3.94	Ø0.81	4.75	Ø2.375	0.625	2.021	3.00	39.80	22.13	20.80	22.60	Ø3.58
444T	II	11.00	18.00	14.50	-	7.50	21.65	18.70	1.18	3.94	Ø0.81	8.50	Ø3.375	0.875	2.880	6.875	43.55	22.13	20.80	22.60	Ø3.58
445TS	II	11.00	18.00	16.50	14.50	7.50	21.65	20.67	1.18	3.94	Ø0.81	4.75	Ø2.375	0.625	2.021	3.00	41.80	22.13	20.80	22.60	Ø3.58
445T	II	11.00	18.00	16.50	14.50	7.50	21.65	20.67	1.18	3.94	Ø0.81	8.50	Ø3.375	0.875	2.880	6.875	45.60	22.13	20.80	22.60	Ø3.58
447TS	II	11.00	18.00	20.00	16.5	7.50	21.65	26.57	1.18	3.94	Ø0.81	4.75	Ø2.375	0.625	2.021	3.00	47.75	22.13	20.80	22.60	Ø3.58
447T	II	11.00	18.00	20.00	16.5	7.50	21.65	26.57	1.18	3.94	Ø0.81	8.50	Ø3.375	0.875	2.880	6.875	51.50	22.13	20.80	22.60	Ø3.58
449TS	II	11.00	18.00	25.00	20.00	7.50	21.65	29.13	1.18	3.94	Ø0.81	4.75	Ø2.375	0.625	2.021	3.00	50.35	22.13	20.80	22.60	Ø3.58
449T	II	11.00	18.00	25.00	20.00	7.50	21.65	29.13	1.18	3.94	Ø0.81	8.50	Ø3.375	0.875	2.880	6.875	54.10	22.13	20.80	22.60	Ø3.58

C-Face Footless

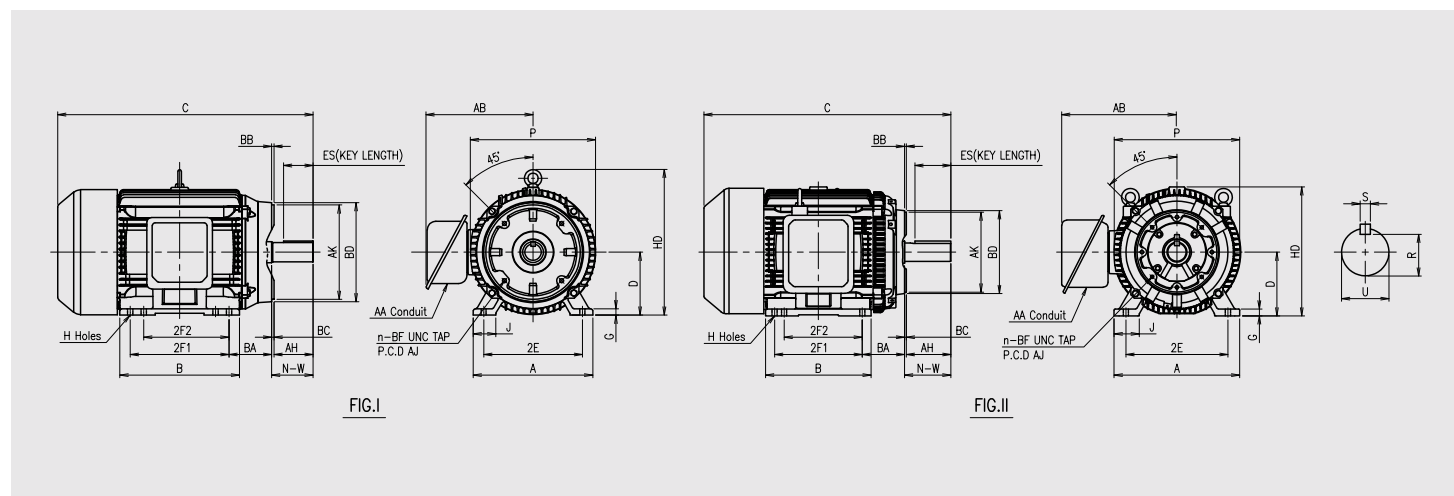
[inch]

Frame	FIG.	Flange								Shaft & Key					Overall				Conduit box
		AJ	AK	BD	AH	BB	BC	BF	n	N-W	U	S	R	ES	C	P	AB	AA	
143T	I	5.875	4.500	4.88	2.12	0.16	+0.12	3/8-16	4	2.25	Ø0.8750	0.188	0.771	1.41	13.40	7.20	6.60	8.85	Ø1.10
145T	I	5.875	4.500	4.88	2.12	0.16	+0.12	3/8-16	4	2.25	Ø0.8750	0.188	0.771	1.41	13.40	7.20	6.60	8.85	Ø1.10
182T	I	7.250	8.500	8.86	2.62	0.26	+0.12	1/2-13	4	2.75	Ø1.1250	0.250	0.986	1.81	15.50	8.94	8.10	11.15	Ø1.10
184T	I	7.250	8.500	8.86	2.62	0.26	+0.12	1/2-13	4	2.75	Ø1.1250	0.250	0.986	1.81	15.50	8.94	8.10	11.15	Ø1.10
213T	I	7.250	8.500	8.82	3.12	0.26	+0.25	1/2-13	4	3.38	Ø1.3750	0.312	1.201	2.44	17.35	10.24	8.80	12.55	Ø1.38
215T	I	7.250	8.500	8.82	3.12	0.26	+0.25	1/2-13	4	3.38	Ø1.3750	0.312	1.201	2.44	18.85	10.24	8.80	12.55	Ø1.38
254T	I	7.250	8.500	9.61	3.75	0.26	+0.25	1/2-13	4	4.00	Ø1.625	0.375	1.416	2.91	22.85	12.52	11.40	14.75	Ø1.77
256T	I	7.250	8.500	9.61	3.75	0.26	+0.25	1/2-13	4	4.00	Ø1.625	0.375	1.416	2.91	24.60	12.52	11.40	14.75	Ø1.77
284TS	I	9.000	10.500	11.00	3.00	0.28	+0.25	1/2-13	4	3.25	Ø1.625	0.375	1.416	1.93	25.60	13.94	11.95	16.25	Ø1.97
284T	I	9.000	10.500	11.00	4.38	0.28	+0.25	1/2-13	4	4.62	Ø1.875	0.500	1.591	3.30	26.95	13.94	11.95	16.25	Ø1.97
286TS	I	9.000	10.500	11.00	3.00	0.28	+0.25	1/2-13	4	3.25	Ø1.625	0.375	1.416	1.93	27.10	13.94	11.95	16.25	Ø1.97
286T	I	9.000	10.500	11.00	4.38	0.28	+0.25	1/2-13	4	4.62	Ø1.875	0.500	1.591	3.30	28.45	13.94	11.95	16.25	Ø1.97
324TS	I	11.000	12.500	13.00	3.50	0.28	+0.25	5/8-11	4	3.75	Ø1.875	0.500	1.591	2.00	28.55	15.59	14.40	18.45	Ø2.48
324T	I	11.000	12.500	13.00	5.00	0.28	+0.25	5/8-11	4	5.25	Ø2.125	0.500	1.845	3.875	30.15	15.59	14.40	18.45	Ø2.48
326TS	I	11.000	12.500	13.00	3.50	0.28	+0.25	5/8-11	4	3.75	Ø1.875	0.500	1.591	2.00	30.05	15.59	14.40	18.45	Ø2.48
326T	I	11.000	12.500	13.00	5.00	0.28	+0.25	5/8-11	4	5.25	Ø2.125	0.500	1.845	3.875	31.55	15.59	14.40	18.45	Ø2.48
364TS	I	11.000	12.500	13.00	3.50	0.28	+0.25	5/8-11	8	3.75	Ø1.875	0.500	1.591	2.00	30.65	17.56	15.60	21.00	Ø3.23
364T	I	11.000	12.500	13.00	5.62	0.28	+0.25	5/8-11	8	5.88	Ø2.375	0.625	2.021	4.25	32.80	17.56	15.60	21.00	Ø3.23
365TS	I	11.000	12.500	13.00	3.50	0.28	+0.25	5/8-11	8	3.75	Ø1.875	0.500	1.591	2.00	31.65	17.56	15.60	21.00	Ø3.23
365T	I	11.000	12.500	13.00	5.62	0.28	+0.25	5/8-11	8	5.88	Ø2.375	0.625	2.021	4.25	33.80	17.56	15.60	21.00	Ø3.23
404TS	II	11.000	12.500	13.00	4.00	0.28	+0.25	5/8-11	8	4.25	Ø2.125	0.500	1.845	2.75	34.20	19.61	18.05	20.24	Ø3.58
404T	II	11.000	12.500	13.00	7.00	0.28	+0.25	5/8-11	8	7.25	Ø2.875	0.750	2.450	5.625	37.20	19.61	18.05	20.24	Ø3.58
405TS	II	11.000	12.500	13.00	4.00	0.28	+0.25	5/8-11	8	4.25	Ø2.125	0.500	1.845	2.75	35.70	19.61	18.05	20.24	Ø3.58
405T	II	11.000	12																

Dimensions



Dimensions



C-Face Foot mounted

[inch]

Frame	FIG.	Mounting										Shaft & Key				
		D	2E	2F1	2F2	BA	A	B	G	J	H	N-W	U	S	R	ES
143T	I	3.50	5.50	4.00	-	2.25	6.54	5.91	0.35	1.46	Ø0.34	2.25	Ø0.8750	0.188	0.771	1.41
145T	I	3.50	5.50	5.00	4.00	2.25	6.54	5.91	0.35	1.46	Ø0.34	2.25	Ø0.8750	0.188	0.771	1.41
182T	I	4.50	7.50	4.50	-	2.75	8.90	6.77	0.63	1.65	Ø0.41	2.75	Ø1.1250	0.250	0.986	1.81
184T	I	4.50	7.50	5.50	4.50	2.75	8.90	6.77	0.63	1.65	Ø0.41	2.75	Ø1.1250	0.250	0.986	1.81
213T	I	5.25	8.50	5.50	-	3.50	10.31	7.01	0.69	1.89	Ø0.41	3.38	Ø1.3750	0.312	1.201	2.44
215T	I	5.25	8.50	7.00	5.50	3.50	10.31	8.50	0.69	1.89	Ø0.41	3.38	Ø1.3750	0.312	1.201	2.44
254T	I	6.25	10.00	8.25	-	4.25	12.24	10.24	0.67	2.52	Ø0.53	4.00	Ø1.625	0.375	1.416	2.91
256T	I	6.25	10.00	10.00	8.25	4.25	12.24	11.97	0.67	2.52	Ø0.53	4.00	Ø1.625	0.375	1.416	2.91
284TS	I	7.00	11.00	9.50	-	4.75	13.31	11.81	0.71	2.52	Ø0.53	3.25	Ø1.625	0.375	1.416	1.93
284T	I	7.00	11.00	9.50	-	4.75	13.31	11.81	0.71	2.52	Ø0.53	4.62	Ø1.875	0.500	1.591	3.30
286TS	I	7.00	11.00	11.00	9.50	4.75	13.31	13.31	0.71	2.52	Ø0.53	3.25	Ø1.625	0.375	1.416	1.93
286T	I	7.00	11.00	11.00	9.50	4.75	13.31	13.31	0.71	2.52	Ø0.53	4.62	Ø1.875	0.500	1.591	3.30
324TS	I	8.00	12.50	10.50	-	5.25	15.04	13.00	0.98	2.75	Ø0.66	3.75	Ø1.875	0.500	1.591	2.00
324T	I	8.00	12.50	10.50	-	5.25	15.04	13.00	0.98	2.75	Ø0.66	5.25	Ø2.125	0.500	1.845	3.875
326TS	I	8.00	12.50	12.00	10.50	5.25	15.04	14.57	0.98	2.75	Ø0.66	3.75	Ø1.875	0.500	1.591	2.00
326T	I	8.00	12.50	12.00	10.50	5.25	15.04	14.57	0.98	2.75	Ø0.66	5.25	Ø2.125	0.500	1.845	3.875
364TS	I	9.00	14.00	11.25	-	5.88	16.77	14.37	0.98	2.91	Ø0.66	3.75	Ø1.875	0.500	1.591	2.00
364T	I	9.00	14.00	11.25	-	5.88	16.77	14.37	0.98	2.91	Ø0.66	5.88	Ø2.375	0.625	2.021	4.25
365TS	I	9.00	14.00	12.25	11.25	5.88	16.77	15.35	0.98	2.91	Ø0.66	3.75	Ø1.875	0.500	1.591	2.00
365T	I	9.00	14.00	12.25	11.25	5.88	16.77	15.35	0.98	2.91	Ø0.66	5.88	Ø2.375	0.625	2.021	4.25
404TS	II	10.00	16.00	12.25	-	6.62	19.69	14.96	1.10	3.94	Ø0.81	4.25	Ø2.125	0.500	1.845	2.75
404T	II	10.00	16.00	12.25	-	6.62	19.69	14.96	1.10	3.94	Ø0.81	7.25	Ø2.875	0.750	2.450	5.625
405TS	II	10.00	16.00	13.75	12.25	6.62	19.69	16.54	1.10	3.94	Ø0.81	4.25	Ø2.125	0.500	1.845	2.75
405T	II	10.00	16.00	13.75	12.25	6.62	19.69	16.54	1.10	3.94	Ø0.81	7.25	Ø2.875	0.750	2.450	5.625
444TS	II	11.00	18.00	14.50	-	7.50	21.65	18.70	1.18	3.94	Ø0.81	4.75	Ø2.375	0.625	2.021	3.00
444T	II	11.00	18.00	14.50	-	7.50	21.65	18.70	1.18	3.94	Ø0.81	8.50	Ø3.375	0.875	2.880	6.875
445TS	II	11.00	18.00	16.50	14.50	7.50	21.65	20.67	1.18	3.94	Ø0.81	4.75	Ø2.375	0.625	2.021	3.00
445T	II	11.00	18.00	16.50	14.50	7.50	21.65	20.67	1.18	3.94	Ø0.81	8.50	Ø3.375	0.875	2.880	6.875
447TS	II	11.00	18.00	20.00	16.50	7.50	21.65	26.57	1.18	3.94	Ø0.81	4.75	Ø2.375	0.625	2.021	3.00
447T	II	11.00	18.00	20.00	16.50	7.50	21.65	26.57	1.18	3.94	Ø0.81	8.50	Ø3.375	0.875	2.880	6.875
449TS	II	11.00	18.00	25.00	20.00	7.50	21.65	29.13	1.18	3.94	Ø0.81	4.75	Ø2.375	0.625	2.021	3.00
449T	II	11.00	18.00	25.00	20.00	7.50	21.65	29.13	1.18	3.94	Ø0.81	8.50	Ø3.375	0.875	2.880	6.875

C-Face Foot mounted

[inch]

Frame	FIG.	Flange								Overall				Conduit box
		AJ	AK	BD	AH	BB	BC	BF	n	C	P	AB	HD	AA
143T	I	5.875	4.500	4.88	2.12	0.16	+0.12	3/8-16	4	13.40	7.20	6.60	8.85	Ø1.10
145T	I	5.875	4.500	4.88	2.12	0.16	+0.12	3/8-16	4	13.40	7.20	6.60	8.85	Ø1.10
182T	I	7.250	8.500	8.86	2.62	0.26	+0.12	1/2-13	4	15.50	8.94	8.10	11.15	Ø1.10
184T	I	7.250	8.500	8.86	2.62	0.26	+0.12	1/2-13	4	15.50	8.94	8.10	11.15	Ø1.10
213T	I	7.250	8.500	8.82	3.12	0.26	+0.25	1/2-13	4	17.35	10.24	8.80	12.55	Ø1.38
215T	I	7.250	8.500	8.82	3.12	0.26	+0.25	1/2-13	4	18.85	10.24	8.80	12.55	Ø1.38
254T	I	7.250	8.500	9.61	3.75	0.26	+0.25	1/2-13	4	22.85	12.52	11.40	14.75	Ø1.77
256T	I	7.250	8.500	9.61	3.75	0.26	+0.25	1/2-13	4	24.60	12.52	11.40	14.75	Ø1.77
284TS	I	9.000	10.500	11.00	3.00	0.28	+0.25	1/2-13	4	25.60	13.94	11.95	16.25	Ø1.97
284T	I	9.000	10.500	11.00	4.38	0.28	+0.25	1/2-13	4	26.95	13.94	11.95	16.25	Ø1.97
286TS	I	9.000	10.500	11.00	3.00	0.28	+0.25	1/2-13	4	27.10	13.94	11.95	16.25	Ø1.97
286T	I	9.000	10.500	11.00	4.38	0.28	+0.25	1/2-13	4	28.45	13.94	11.95	16.25	Ø1.97
324TS	I	11.000	12.500	13.00	3.50	0.28	+0.25	5/8-11	4	28.55	15.59	14.40	18.45	Ø2.48
324T	I	11.000	12.500	13.00	5.00	0.28	+0.25	5/8-11	4	30.15	15.59	14.40	18.45	Ø2.48
326TS	I	11.000	12.500	13.00	3.50	0.28	+0.25	5/8-11	4	30.05	15.59	14.40	18.45	Ø2.48
326T	I	11.000	12.500	13.00	5.00	0.28	+0.25	5/8-11	4	31.55	15.59	14.40	18.45	Ø2.48
364TS	I	11.000	12.500	13.00	3.50	0.28	+0.25	5/8-11	8	30.65	17.56	15.60	21.00	Ø3.23
364T	I	11.000	12.500	13.00	5.62	0.28	+0.25	5/8-11	8	32.80	17.56	15.60	21.00	Ø3.23
365TS	I	11.000	12.500	13.00	3.50	0.28	+0.25	5/8-11	8	31.65	17.56	15.60	21.00	Ø3.23
365T	I	11.000	12.500	13.00	5.62	0.28	+0.25	5/8-11	8	33.80	17.56	15.60	21.00	Ø3.23
404TS	II	11.000	12.500	13.00	4.00	0.28	+0.25	5/8-11	8	34.20	19.61	18.05	20.24	Ø3.58
404T	II	11.000	12.500	13.00	7.00	0.28	+0.25	5/8-11	8	37.20	19.61	18.05	20.24	Ø3.58
405TS	II	11.000	12.500	13.00	4.00	0.28	+0.25	5/8-11	8	35.70	19.61	18.05	20.24	Ø3.58
405T	II	11.000	12.500	13.00	7.00	0.28	+0.25	5/8-11	8	38.70	19.61	18.05	20.24	Ø3.58
444TS	II	14.000	16.000	16.50	4.50	0.28	+0.25	5/8-11	8	39.80	22.13	20.80	22.60	Ø3.58
444T	II	14.000	16.000	16.50	8.25	0.28	+0.25	5/8-11	8	43.55	22.13	20.80	22.60	Ø3.58
445TS	II	14.000	16.000	16.50	4.50	0.28	+0.25	5/8-11	8	41.80	22.13	20.80	22.60	Ø3.58
445T	II	14.000	16.000	16.50	8.25	0.28	+0.25	5/8-11	8	45.60	22.13	20.80	22.60	Ø3.58
447TS	II	14.000	16.000	16.50	4.50	0.28	+0.25	5/8-11	8	47.75	22.13	20.80	22.60	Ø3.58
447T	II	14.000	16.000	16.50	8.25	0.28	+0.25	5/8-11	8	51.50	22.13	20.80	22.60	Ø3.58
449TS	II	14.000	16.000	16.50	4.50	0.28	+0.25	5/8-11	8	50.35	22.13	20.80	22.60	Ø3.58
449T	II	14.000	16.000	16.50	8.25	0.28	+0.25	5/8-11	8	54.10	22.13	20.80	22.60	Ø3.58

About Hyosung

Hyosung, your trustworthy partner, together with customers and the world. Based on outstanding technical capabilities and services in various industries, including heavy industries equipment, textiles, advanced materials, construction, trade, and information and communication, Hyosung is striving to lead the global market.

Hyosung Heavy Industries

Aiming Global Top Energy, Machinery & Plant Solution Provider, we are specializing in power systems, including transformers and switchgears. And also engages in industrial machinery such as electric motors. We support global infrastructure with eco-friendly and future-oriented technologies. Hyosung Heavy Industries consist of three Performance Unit(PU) - Industrial Machinery PU, Power System PU and Hyosung Goodsprings PU.

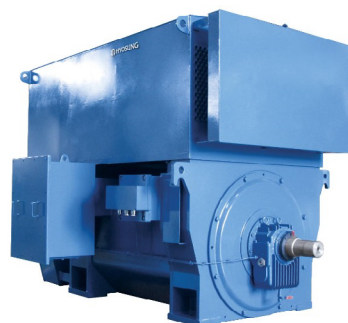
Hyosung Industrial Machinery Performance Unit

We specialize in the production of rotating machinery such as motors, generators, gears, and industrial equipment including chemical processing units. We provide optimal integrated solutions to meet the diverse and wide-ranging needs of our customers. Through continuous technical innovation, we provide reliability and high-efficiency for significant cost reduction.

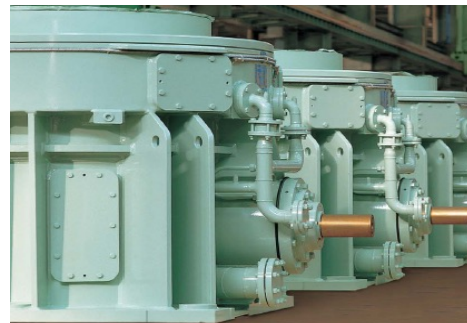
In the motor sector, we manufacture a full spectrum of electric motors, as well as super premium efficiency motors, military-use motors, explosion-proof type motors, and permanent magnet motors. With monthly production capacity exceeding 40,000 units, our facility can produce motors that meet global standards including KS, IEC, and NEMA. These motors are optimized for any application and environment worldwide. Our generator lineup includes core power systems such as medium and high-speed industrial generators, marine generators, and wind power generators. We also manufacture highly reliable gears for various applications including general industrial use, offshore drilling platforms, pulverizers, and wind turbines. In the industrial machinery sector, we export key equipment for petrochemical, oil, and gas plants - such as towers (columns), reactors, pressure vessels, and heat exchangers.

We are committed to aligning with our customers' goals, strictly adhering to international and industry standards. Our technical expertise and product quality have been globally recognized. Hyosung's high-quality products are used across a wide range of industries, including steel, petrochemical, cement, wind, hydro, and thermal power generation, marine energy, nuclear energy, shipbuilding, mining, and defense.

Hyosung Products



MV motor



Gear unit



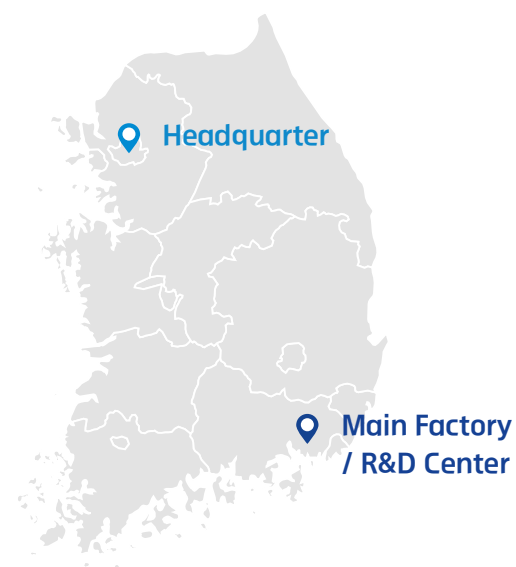
Generator

Global manufacturing network

USA



KOREA



VIETNAM



HYOSUNG

HEAVY INDUSTRIES

Headquarter	114, Mapo-gu, Mapo-daero, Seoul, Korea
Main Factory	303, Gongdan-ro, Changwon-si, Korea
Vietnam Factory	Nhon trach 5 industrial zone, Dong Nai Province, Vietnam

Inquiries	Lvmotor@Hyosung.com
Service	hicoservice@Hyosung.com

www.hyosungheavyindustries.com



© Copyright 2025 HYOSUNG HEAVY INDUSTRIES CORPORATION
All rights reserved. Contents are subject to change without notice.



website



manual