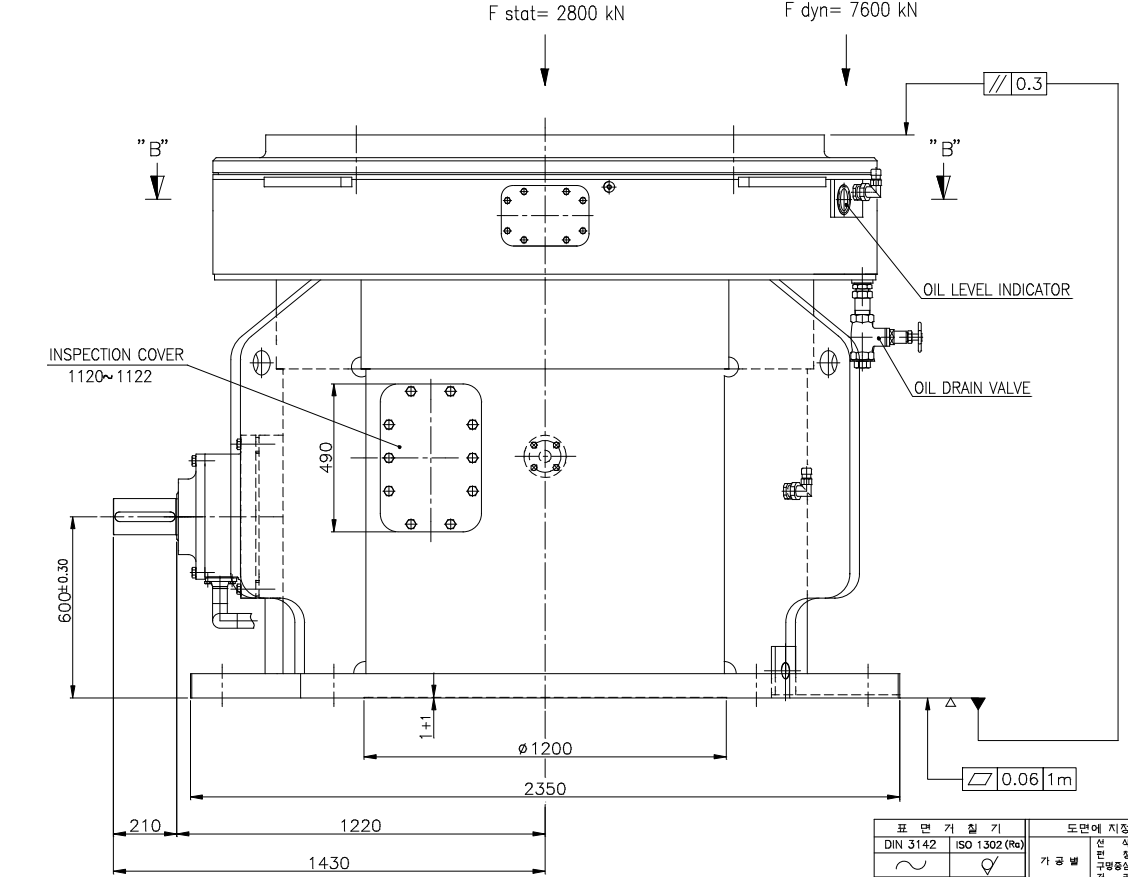
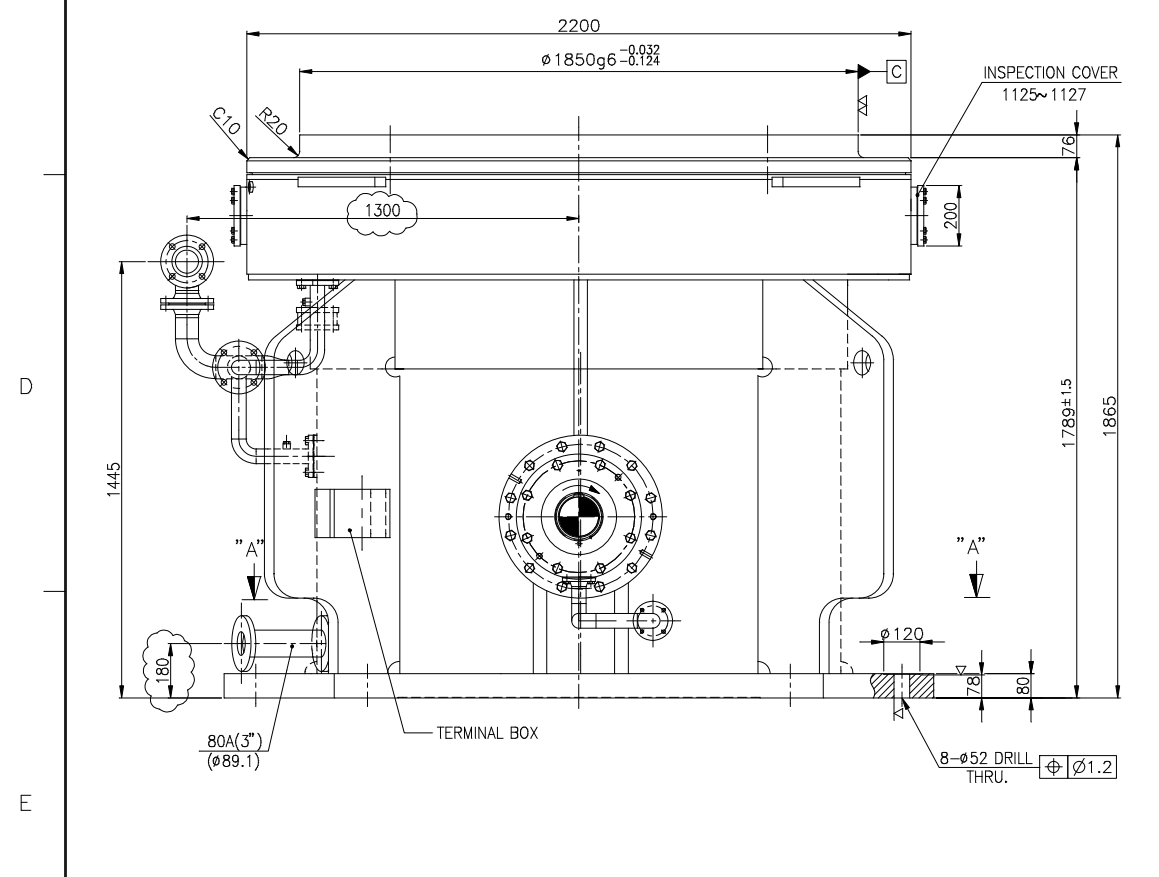
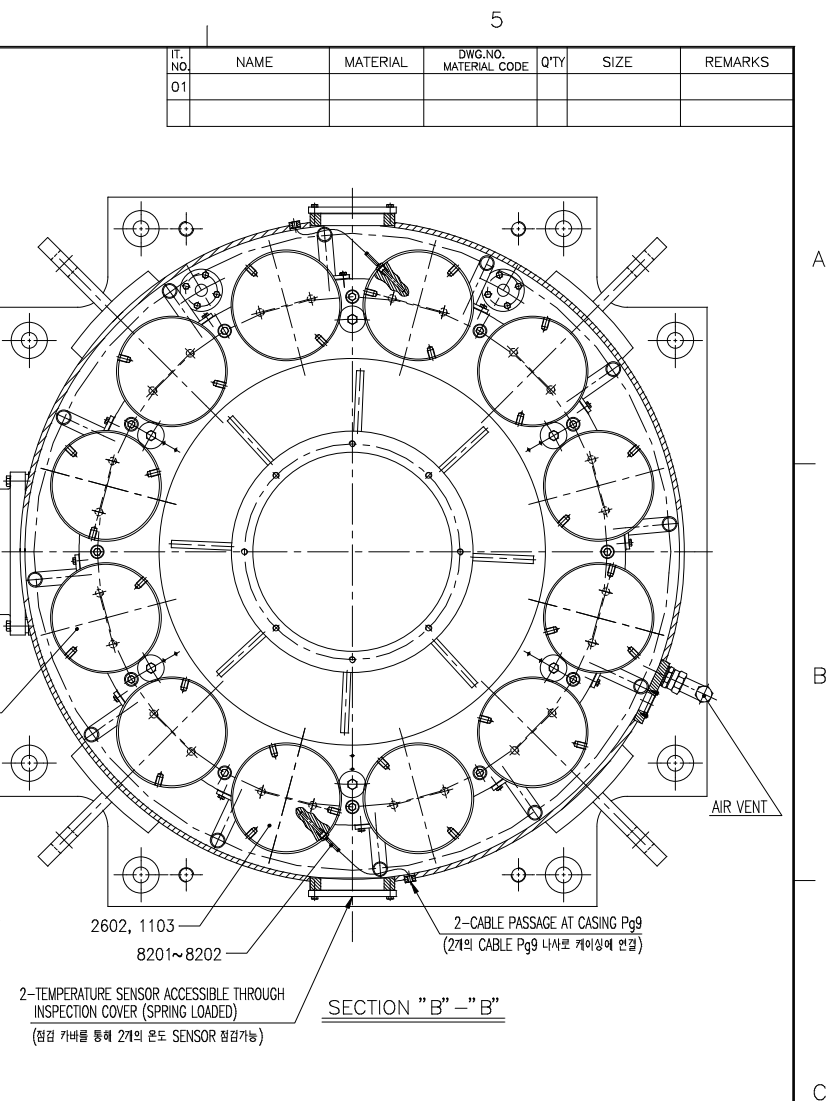
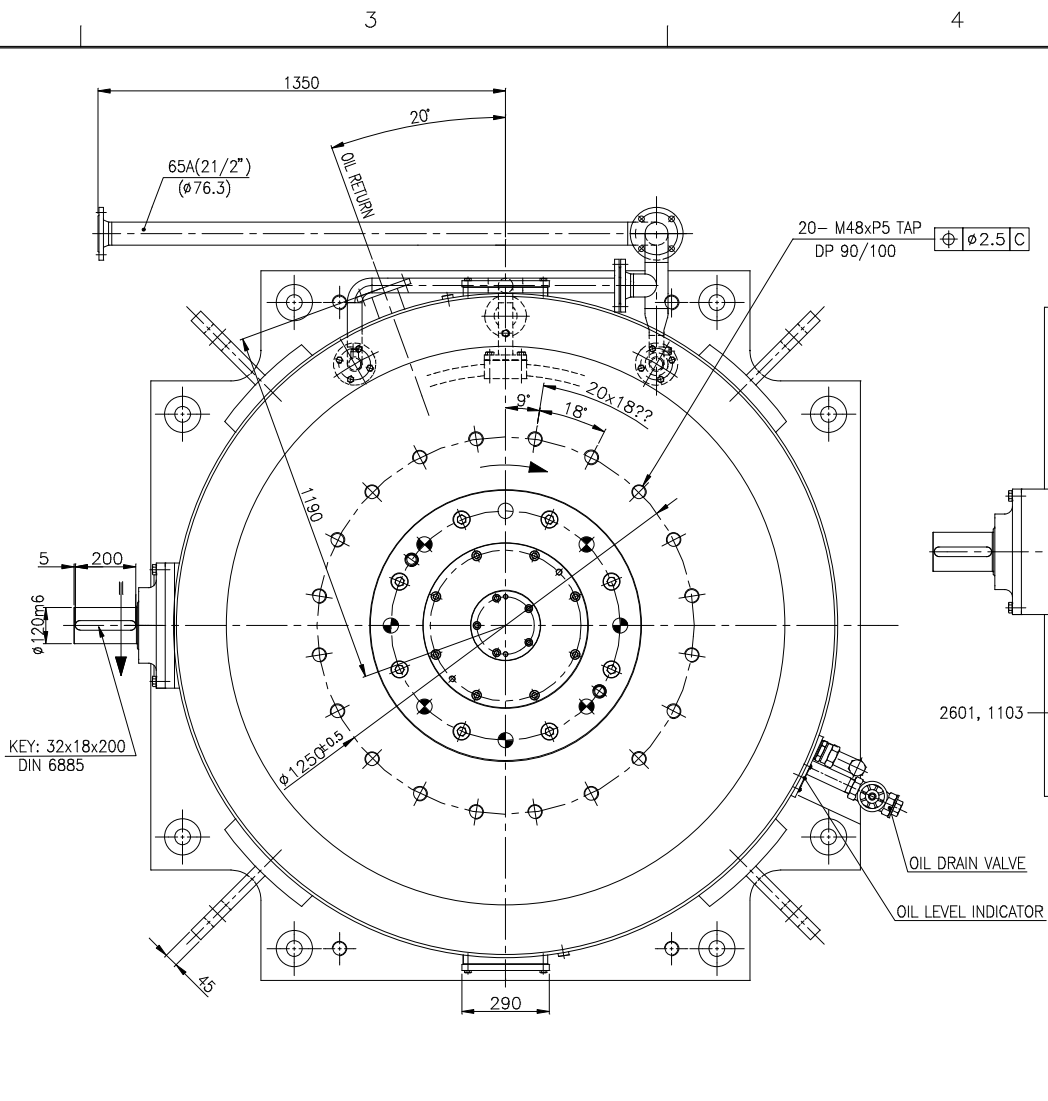
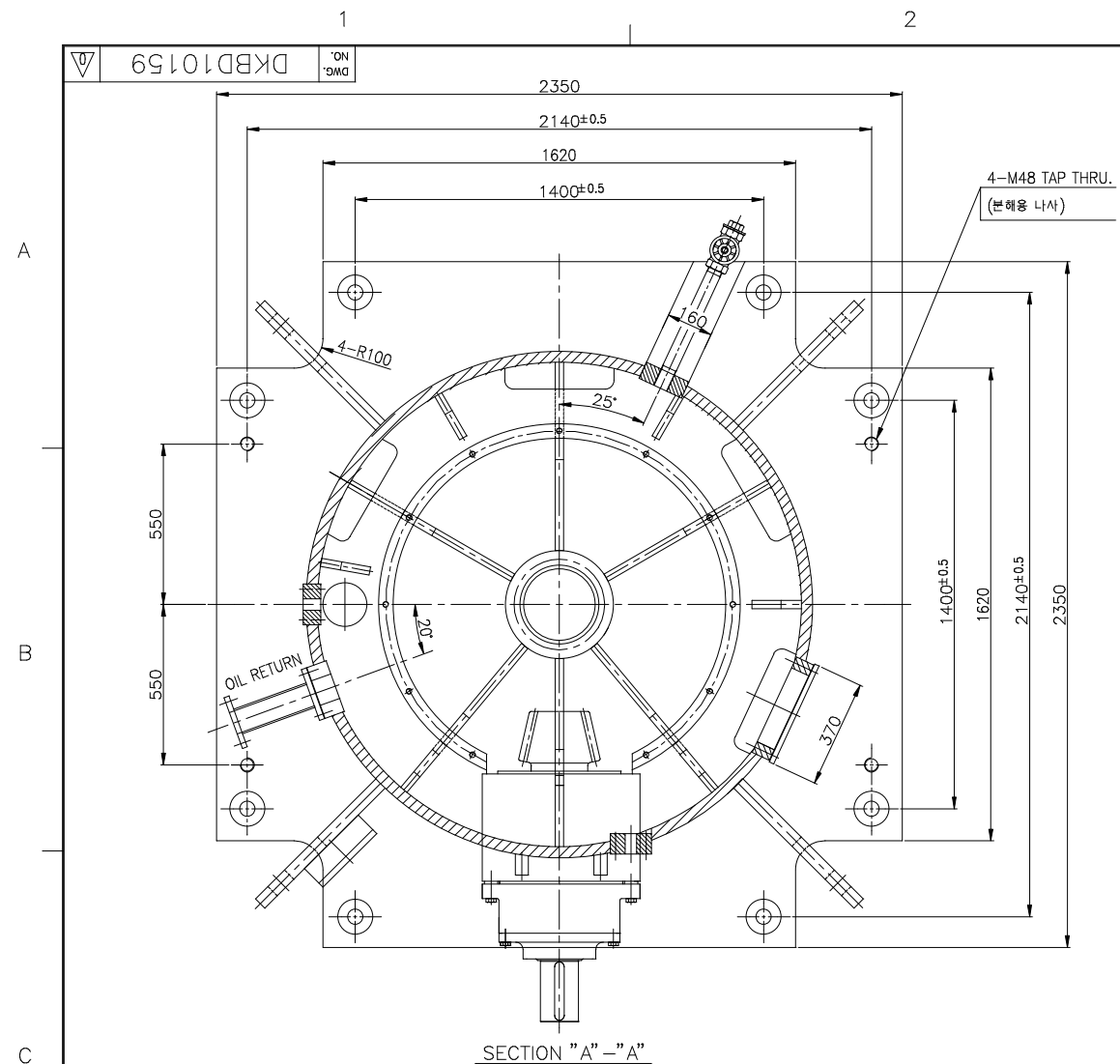


ITEM NO.	NAME	MATERIAL	DWG. NO. MATERIAL CODE	Q'TY	SIZE	REMARKS
01						



SPECIFICATION

Motor power	1 P =	632 kW (847 HP)
Mill continuous power	2 P =	632 kW (847 HP)
Input speed	1 n =	1188 min ⁻¹
Output speed	2 n =	29.01 min ⁻¹
Ratio	i =	40.94
EP-Oil viscosity class		ISO VG 320 or VG 220
Oil pressure at the inlet into gear unit	p =	1-2 bar
Oil temperature at the inlet into gear unit		ca. 50 °C
Oil quantity:		abt. 1950 l
Weight without oil filling		abt. 23,300 kg

REV	DESCRIPTION	APPR	CHK	DRWN	DATE
△					
△					
△					
△					

표면 거칠기		도면에 지정되지 않은 일반공차				TYPE KPAV140		DWG. NAME	
DIN 3142	ISO 1302 (Ra)	선삭	삭	밀	관주	DESIGN	CHECKED	REVIEWED	APPROVED
▽	0.1	J1	J2	J3	J4	DRWN	CHK	REV	APP
▽▽	0.2	0.1	0.2	0.3	0.5	2007.04.23	2007.04.23	2007.04.23	2007.04.23
▽▽▽	0.3	0.2	0.3	0.5	0.7	이	의	의	의
▽▽▽▽	0.4	0.3	0.4	0.7	1.0	상인	지은	중단	
▽▽▽▽▽	0.5	0.4	0.6	1.0	1.5				
▽▽▽▽▽▽	0.6	0.6	0.8	1.5	2.0				
▽▽▽▽▽▽▽	0.8	0.8	1.0	2.0	2.5				
▽▽▽▽▽▽▽▽	1.0	1.0	1.5	2.5	3.0				
▽▽▽▽▽▽▽▽▽	1.2	1.5	2.0	3.0	4.0				