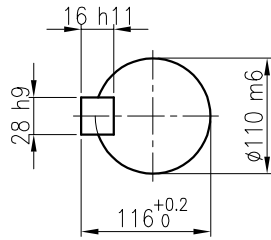
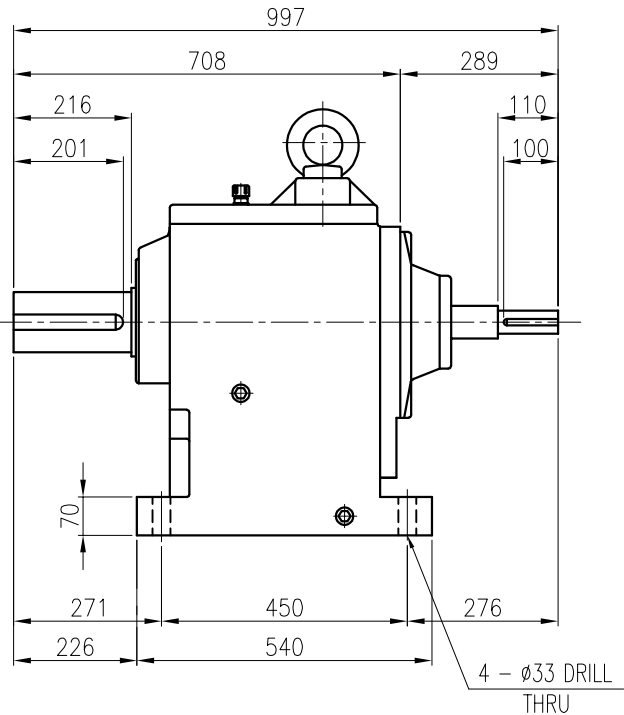
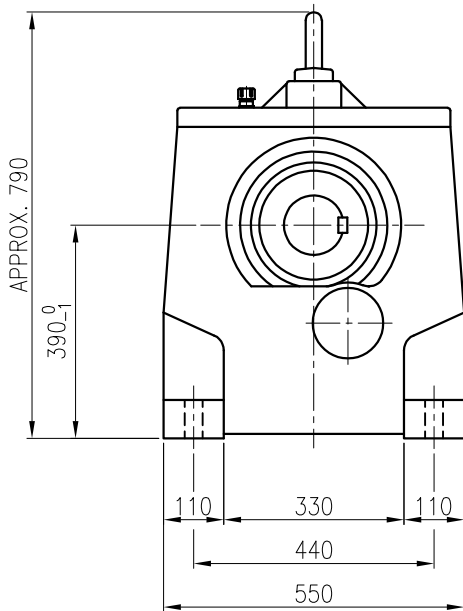
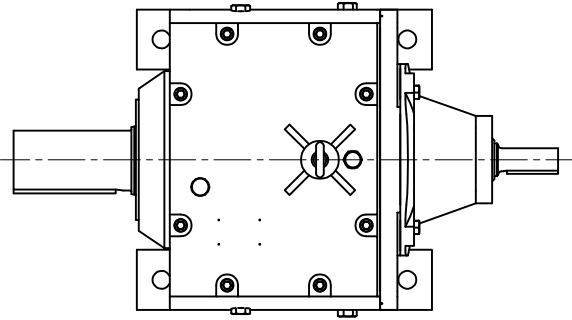


INPUT SHAFT
(12 x 8 x 94)



OUTPUT SHAFT
(28 x 16 x 187)



		BEARING			
		INPUT SHAFT	6312ZZ	6312ZZ	
OIL SEAL		2ND PINION	6310	NJ310E	OIL : ISO VG 220
MOTOR SHAFT	D(M) 60 x 130 x 12	3RD PINION	NJ312E	NJ312E	ABOUT 55 l
OUTPUT SHAFT	D(M) 125 x 200 x 14	OUTPUT SHAFT	22216	22222	WEIGHT 540 kg

		외형도 OUTLINE DIMENSION			
		DWG No. EK2D007286H0001		UNIT	mm
				SCALE	1:1
No.	DATE	DESIGNED	CHECKED	REVIEWED	APPROVED
		2018.10.01	2018.10.01	2018.10.01	2018.10.01
		최성민	문병선	박희성	홍원철
DESCRIPTION of REVISION		DATE	2018-08-15		
		REVISION No.	01		
		THIRD ANGLE PROJECTION			
REF. No.		(GKDS481)			(A)

HYOSUNG HEAVY INDUSTRIES

TYPE HH39_160M(11KW)_90~120:1_N type

이 도면상에 표시된 정보는 HYOSUNG HEAVY INDUSTRIES의 소유이며, 영시의 사전 서면동의 없이 무단사용을 금합니다.