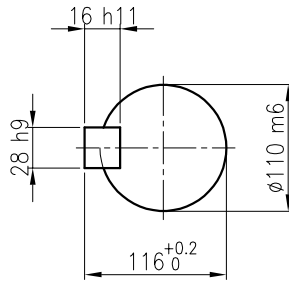


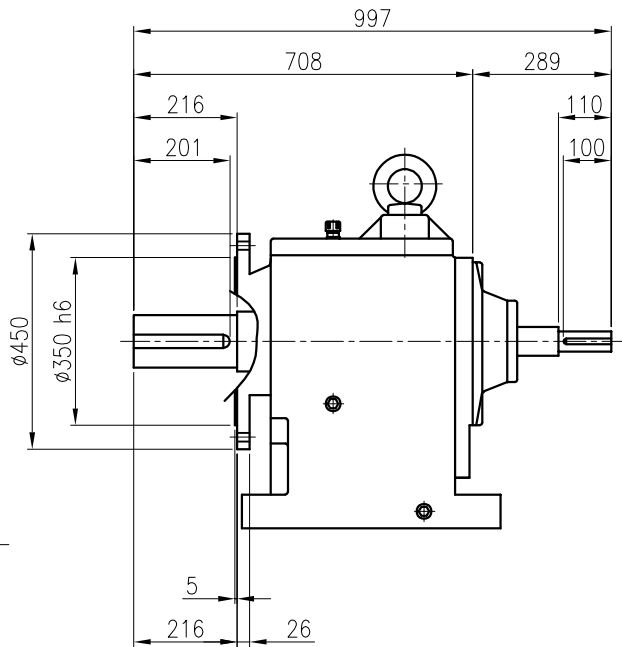
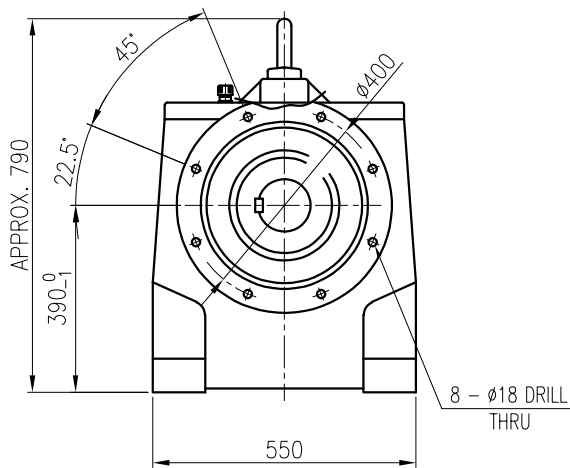
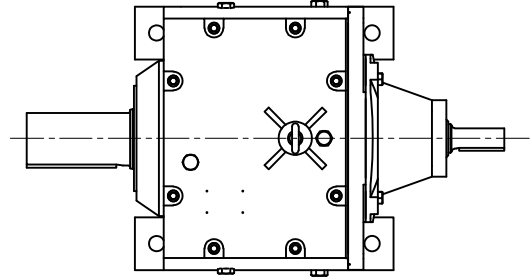
INPUT SHAFT

(12 x 8 x 94)



OUTPUT SHAFT

(28 x 16 x 187)



BEARING			
INPUT SHAFT	6312ZZ	6312ZZ	
2ND PINION	6310	NJ310E	
3RD PINION	NJ312E	NJ312E	
OUTPUT SHAFT	22216	22222	

OIL SEAL		2ND PINION	6310	NJ310E	OIL : ISO VG 220
MOTOR SHAFT	D(M) 60 x 130 x 12	3RD PINION	NJ312E	NJ312E	ABOUT 55 l
OUTPUT SHAFT	D(M) 125 x 200 x 14	OUTPUT SHAFT	22216	22222	WEIGHT 540 kg

No.		DATE	DESCRIPTION of REVISION	DESIGNED	CHECKED	REVIEWED	APPROVED	DATE	2018-08-15
A4(210x297mm)		FORM	<p>HYOSUNG HEAVY INDUSTRIES</p>	2018.10.01	2018.10.01	2018.10.01	2018.10.01	REVISION No.	01
CE-14-0100-4A4		2013.11.20		최성민	문병선	박희성	홍원철	THIRD ANGLE PROJECTION	
TYPE		HF39_160M(11KW)_90~120:1_N type		REF. No.	(GKDS485)			A	